


# STATE PLAN FOR INDEPENDENT LIVING GOALS

## QUARTERLY REVIEW TOOL TRAINING



Dec.1, 2010

Missouri Department of Elementary  
and Secondary Education

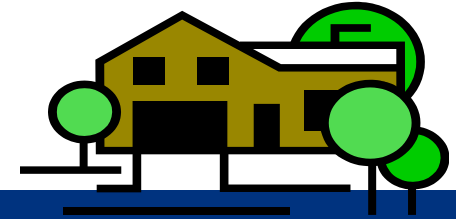
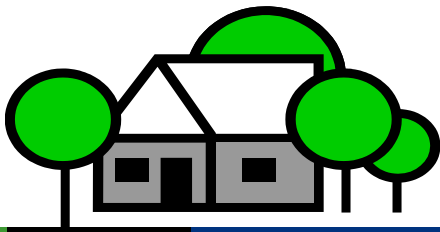
- 
- Purpose: To assist in monitoring the progress of the goals/objectives in the SPIL.
  - Mandated by federal regulations to monitor assessment of IL services being provided.
  - Data used to prepare annual budgets/accountability of state/federal funds.
  - Sharing of best case practices.



- Each goal, objective, and indicator is listed with four quarter's representing the federal fiscal year.
- Every quarter does not need documentation.  
(Please put NA when applicable.)
- Each goal, objective, and indicator needs to show activities done during the applicable quarter.
- Anytime a CIL's effort changes towards a goal or objective an explanation should be given.



- **Goal 1: Individuals with disabilities in Missouri have access to programs to develop and support their independence.**
  
- There are seven Objectives and nine Indicators that demonstrate how this goal is being done in the State of Missouri in FY2011-2013.
  
- **Objective 1.1 Individuals with disabilities in Missouri have knowledge of the Olmstead Act and De-institutionalization.**



- **Indicator 1.1:** 10% increase over baseline number of individuals served by CILs who are transitioned from institutions over three years.
  
- **Year 1:** SILC and CILs will identify IL providers and baseline number of individuals transitioned from institutions. Information will be gathered to evaluate the increase in the number transitioned.
  
- Take baseline number from 4<sup>th</sup> Qtr FY10 QSR Subpart III Section B Item 1 Column L (YTD Goals Achieved ) Line J (Relocation-Nursing Home or Institution).

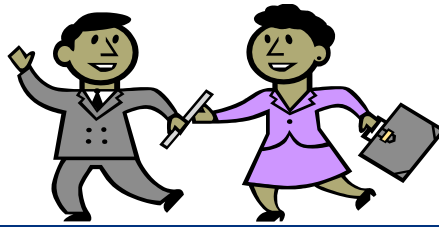
## SECTION B

### Increased Independence and Community Integration

#### Item 1

Indicate the number of consumers who set goals related to the following significant life areas, the number whose goals are still in progress, and the number who achieved their goals as a result of the provision of IL services.

	Prior YTD Goals Set	Goals Set this QTR	YTD Goals Set	Goals Achieved this QTR	YTD Goals Achieved	Goals dropped THIS QTR	YTD Goals "In Progress"
<b>SAMPLE</b>	16	3	19	1	7	2	5
Self-Advocacy/Self-Empowerment <b>A</b>	0		0		0		0
Communication <b>B</b>	0		0		0		0
Mobility/Transportation <b>C</b>	0		0		0		0
Community-Based Living <b>D</b>	0		0		0		0
Educational <b>E</b>	0		0		0		0
Vocational <b>F</b>	0		0		0		0
Self-Care <b>G</b>	0		0		0		0
Information Access/Technology <b>H</b>	0		0		0		0
Personal Resource Management <b>I</b>	0		0		0		0
Relocation from a Nursing Home or Institution <b>J</b>	0		0		0		0
Community/Social Participation <b>K</b>	0		0		0		0
Other <b>L</b>	0		0		0		0



- **How many individuals were transitioned from institutions during each quarter of the current fiscal year?** (One source for this information would be the Quarterly Service Report (QSR).

## SECTION B

### Increased Independence and Community Integration

#### Item 1

Indicate the number of consumers who set goals related to the following significant life areas, the number whose goals are still in progress, and the number who achieved their goals as a result of the provision of IL services.

	Prior YTD Goals Set	Goals Set this QTR	YTD Goals Set	Goals Achieved this QTR	YTD Goals Achieved	Goals dropped THIS QTR	YTD Goals "In Progress"
<b>SAMPLE</b>	16	3	19	1	7	2	5
Self-Advocacy/Self-Empowerment A	0		0		0		0
Communication B	0		0		0		0
Mobility/Transportation C	0		0		0		0
Community-Based Living D	0		0		0		0
Educational E	0		0		0		0
Vocational F	0		0		0		0
Self-Care G	0		0		0		0
Information Access/Technology H	0		0		0		0
Personal Resource Management I	0		0		0		0
<b>Relocation from a Nursing Home or Institution J</b>	0		0		0		0
Community/Social Participation K	0		0		0		0
Other L	0		0		0		0



- **Indicator 1.1.2:** 10% increase over baseline number of individuals with disabilities served by CILs who are diverted from institutions over three years.
  
  - **How many individuals were diverted from institutions during each quarter of the current fiscal year?**
- (Examples-Consumers receiving CDS, In Home, Information & Referral, etc... Report only new individuals diverted each quarter.)



- **Year 1:** SILC and CLs will identify IL providers and baseline number of individuals with disabilities diverted from institutions.

**Information will be gathered to measure the number diverted.**



- **Indicator 1.1.3:** SILC and CILs will develop training on the Olmstead Act and offer to non CIL providers over three years.
- **What training was provided on the Olmstead Act and to whom during each quarter of the current fiscal year?**



- **Objective 1.2: Policy makers and local officials in Missouri have knowledge of the Olmstead Act and de-institutionalization.**
  
- **Indicator 1.2.1:** SILC and CLs will develop an educational tool on the Olmstead Act and will utilize it in educating policy makers and local officials. With turnover in these positions, repeat training will be required during the three years.



- **Objective 1.3: Individuals with disabilities in Missouri have access to advocacy.**
- **Indicator 1.3.1:** 15% increase of advocacy services to individuals with disabilities statewide over 3 years. This will be measured using information from the annual 704 reports.

### SUBPART III

#### SECTION A

For the reporting year, indicate how many consumers requested and received each type of IL service.

Individual Services	QTR CARRYOVER			NEW QTR services			QTR CARRYOVER		
	services requested	requested	YTD requested	services received	received	YTD received	services requested	requested	YTD requested
<b>Advocacy/ Legal Services A</b>	0	+	=	0	0	+	=	0	0
Assistive Devices/Equipment Services B	0	+	=	0	0	+	=	0	0
Children's Services C	0	+	=	0	0	+	=	0	0
Communication Services D	0	+	=	0	0	+	=	0	0
Counseling and Related Services E	0	+	=	0	0	+	=	0	0
Family Services F	0	+	=	0	0	+	=	0	0
Housing, Home Mods and Shelter Services G	0	+	=	0	0	+	=	0	0
IL and Life Skills Training Services H	0	+	=	0	0	+	=	0	0
Information and Referral Services I	0	+	=	0	0	+	=	0	0
Mental Restoration Services J	0	+	=	0	0	+	=	0	0
Mobility Training Services K	0	+	=	0	0	+	=	0	0
Peer Counseling Services L	0	+	=	0	0	+	=	0	0
Personal Assistance Services M	0	+	=	0	0	+	=	0	0
Physical Restoration Services N	0	+	=	0	0	+	=	0	0
Preventive Services O	0	+	=	0	0	+	=	0	0
Prostheses and Orthotics, & other Appliances P	0	+	=	0	0	+	=	0	0
Recreational Services Q	0	+	=	0	0	+	=	0	0
Rehabilitation Technology Services R	0	+	=	0	0	+	=	0	0
Therapeutic Treatment Services S	0	+	=	0	0	+	=	0	0
Transportation Services T	0	+	=	0	0	+	=	0	0
Youth Services U	0	+	=	0	0	+	=	0	0
Vocational Services V	0	+	=	0	0	+	=	0	0
Other Services W	0	+	=	0	0	+	=	0	0

NEW  
QTR  
services  
received



- **Objective 1.4: Individuals with disabilities in Missouri have access to peer support services.**
- **Indicator 1.4.1:** 10% increase of peer support services to individuals with disabilities statewide over 3 years. Increases will be measured using data from the annual 704 report.

**SUBPART III**

**SECTION A**

For the reporting year, indicate how many consumers requested and received each type of IL service.

Individual Services	Requested			Received		
	QTR CARRYOVER services requested	NEW QTR services requested	YTD requested	QTR CARRYOVER services received	NEW QTR services received	YTD received
Advocacy/Legal Services	0	0	0	0	0	0
Assistive Devices/Equipment Services	0	0	0	0	0	0
Children's Services	0	0	0	0	0	0
Communication Services	0	0	0	0	0	0
Counseling and Related Services	0	0	0	0	0	0
Family Services	0	0	0	0	0	0
Housing, Home Mods and Shelter Services	0	0	0	0	0	0
IL and Life Skills Training Services	0	0	0	0	0	0
Information and Referral Services	0	0	0	0	0	0
Mental Restoration Services	0	0	0	0	0	0
Mobility Training Services	0	0	0	0	0	0
Peer Counseling Services	0	0	0	0	0	0
Personal Assistance Services	0	0	0	0	0	0
Physical Restoration Services	0	0	0	0	0	0
Preventive Services	0	0	0	0	0	0
Prostheses and Orthotics, & other Appliances	0	0	0	0	0	0
Recreational Services	0	0	0	0	0	0
Rehabilitation Technology Services	0	0	0	0	0	0
Therapeutic Treatments	0	0	0	0	0	0
Transportation Services	0	0	0	0	0	0
Youth Services	0	0	0	0	0	0
Vocational Services	0	0	0	0	0	0
Other Services	0	0	0	0	0	0



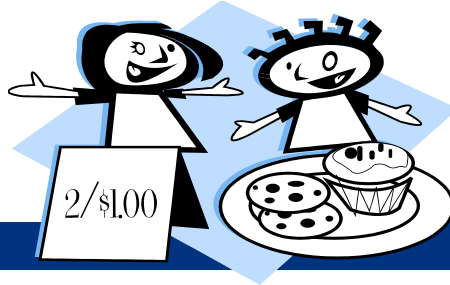
- **Objective 1.5: Individuals with disabilities in Missouri have access to Information and Referral services.**
- **Indicator 1.5.1:** 15% increase of Information and Referral services to individuals with disabilities statewide over 3 years. This will be measured annually using information from the 704 reports.

**SUBPART III**

**SECTION A**

For the reporting year, indicate how many consumers requested and received each type of IL service.

Individual Services	QTR CARRYOVER	NEW QTR services	YTD requested	QTR CARRYOVER	NEW QTR services	YTD received
	services requested	requested		services received	received	
Advocacy/Legal Services	0 +		= 0	0 +		= 0
Assistive Devices/Equipment Services	0 +		= 0	0 +		= 0
Children's Services	0 +		= 0	0 +		= 0
Communication Services	0 +		= 0	0 +		= 0
Counseling and Related Services	0 +		= 0	0 +		= 0
Family Services	0 +		= 0	0 +		= 0
Housing, Home Mods and Shelter Services	0 +		= 0	0 +		= 0
IL and Life Skills Training Services	0 +		= 0	0 +		= 0
Information and Referral Services	0 +		= 0	0 +		= 0
Mental Restoration Services	0 +		= 0	0 +		= 0
Mobility Training Services	0 +		= 0	0 +		= 0
Peer Counseling Services	0 +		= 0	0 +		= 0
Personal Assistance Services	0 +		= 0	0 +		= 0
Physical Restoration Services	0 +		= 0	0 +		= 0
Preventive Services	0 +		= 0	0 +		= 0
Prostheses and Orthotics, & other Appliances	0 +		= 0	0 +		= 0
Recreational Services	0 +		= 0	0 +		= 0
Rehabilitation Technology Services	0 +		= 0	0 +		= 0
Therapeutic Treatment	0 +		= 0	0 +		= 0
Transportation Services	0 +		= 0	0 +		= 0
Youth Services	0 +		= 0	0 +		= 0
Vocational Services	0 +		= 0	0 +		= 0
Other Services	0 +		= 0	0 +		= 0



- **Objective 1.6: Individuals with disabilities in Missouri have access to IL skills training services.**
- **Indicator 1.6.1:** 15% increase of IL skills training services to individuals with disabilities statewide over 3 years. This will be measured annually using information from the 704 reports.

**SECTION A**

For the reporting year, indicate how many consumers requested and received each type of IL service.

Individual Services		QTR	NEW QTR	YTD	QTR	NEW QTR	YTD received
		CARRYOVER services requested	services requested	requested	CARRYOVER services received	services received	
Advocacy/Legal Services	A	0+		0	0+		0
Assistive Devices/Equipment Services	B	0+		0	0+		0
Children's Services	C	0+		0	0+		0
Communication Services	D	0+		0	0+		0
Counseling and Related Services	E	0+		0	0+		0
Family Services	F	0+		0	0+		0
Housing, Home Mods and Shelter Services	G	0+		0	0+		0
IL and Life Skills Training Services	H	0+		0	0+		0
Information and Referral Services	I	0+		0	0+		0
Mental Restoration Services	J	0+		0	0+		0
Mobility Training Services	K	0+		0	0+		0
Peer Counseling Services	L	0+		0	0+		0
Personal Assistance Services	M	0+		0	0+		0
Physical Restoration Services	N	0+		0	0+		0
Preventive Services	O	0+		0	0+		0
Prostheses and Orthotics, & other Appliances	P	0+		0	0+		0
Recreational Services	Q	0+		0	0+		0
Rehabilitation Technology Services	R	0+		0	0+		0
Therapeutic Treatment	S	0+		0	0+		0
Transportation Services	T	0+		0	0+		0
Youth Services	U	0+		0	0+		0
Vocational Services	V	0+		0	0+		0
Other Services	W	0+		0	0+		0



- **Objective 1.7: IL providers statewide have additional knowledge of available resources (financial, equipment, and training).**
- **Indicator 1.7.1: SILC will collaborate with the CILs to offer 4 trainings per year for IL providers statewide. These trainings will be funded using funds other than Federal Part B funding. 5% of participants attending trainings are not from CILs.**



- **GOAL 2: Individuals with disabilities in Missouri have access to programs, services, and activities to support them in their community.**
- There are six Objectives and seven Indicators that demonstrate how this goal is being done in the State of Missouri in FY2011-2013.



- **Objective 2.1: Increase knowledge about accessible affordable housing for individuals with disabilities in Missouri by continuing to educate members of the housing industry.**
  
- **Indicator 2.1.1: SILC will collaborate with the CILS to offer regional training in the state and will have universal design (UD) information available on the SILC website. Training will be funded using funds other than Federal Part B funding.**



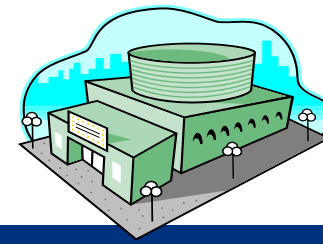
- **Objective 2.2: Provide statewide information of available accessible transportation resources to individuals with disabilities in Missouri.**
  
- **Indicator 2.2.1:** The SILC website will have a listing of transportation resources available throughout the state. The CILs will provide information for updates to the site when new transportation programs develop in their area.



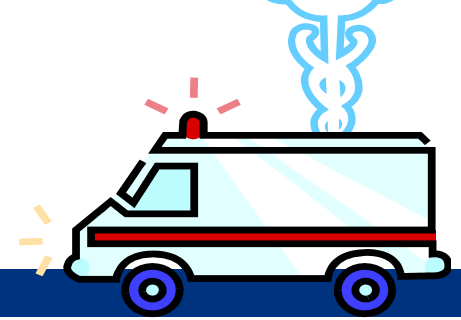
Name of Provider	Counties Served	Type of Services	Operating Hours	Contact Information



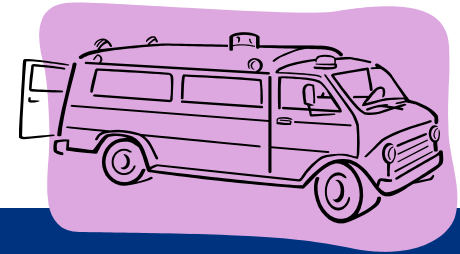
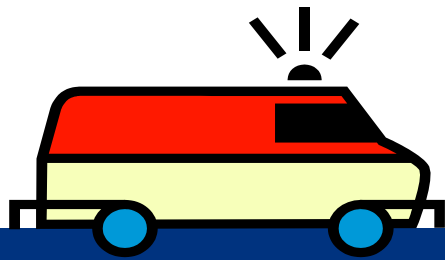
- **Objective 2.3: Individuals with disabilities in Missouri have employment options.**
  
- **Indicator 2.3.1:** The SILC, DSU and CILs will work together to develop programs tailored specifically to a Center's catchment area to increase employment opportunities for their consumers.



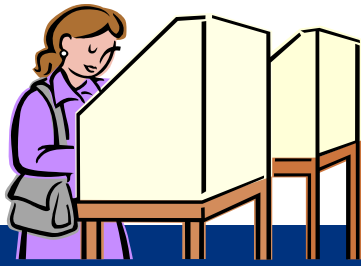
- **Objective 2.4: Implement a team approach with CILs, VR and local school districts to provide youth with disabilities in Missouri informed choices regarding transition from school to community inclusion.**
  
- **Indicator 2.4.1:** Center staff will work with VR counselors to provide IL skills for transition age youths. CIL's and VR will collaborate in contacting local school districts to offer information and assistance with IEP, employment options, establishing a transition program, etc.



- **Objective 2.5:** SILC and CILs will collaborate with local emergency management agencies to provide access to emergency management preparation and response services for special needs populations and will communicate those services to consumers.
- **Indicator 2.5.1:** SILC will collaborate with CILs to provide annual training on disability awareness to emergency services providers.



- **Indicator 2.5.2: 10% increase over baseline number of individuals with disabilities surveyed report being prepared for an emergency.**
- **Year 1: SILC will develop a survey to obtain baseline numbers.**
- **Year 2: Increase over baseline number of individuals with disabilities surveyed are more aware of emergency services.**
- **Year 3: By end of year three-10% increase over baseline number of individuals with disabilities surveyed who are more aware of emergency services.**



- **Objective 2.6: Individuals with disabilities exercise right to vote.**
  
- **Indicator 2.6.1: 5% increase over baseline number of individuals with disabilities per year are registered to vote as reported by the MO Vote Project.**

# Outreach to Unserved and Underserved Populations

- **Identify any activities conducted quarterly by your CIL during the current fiscal year for persons with disabilities for any of these populations:**
- Asian, Psychiatric disabilities, African Americans, Youths with disabilities, Cognitive disabilities, Developmental disabilities, Hispanic, People with refugee status, Veterans, Senior Citizens, Homeless, Unemployed, GLBT (gay, lesbian, bi-sexual, transgender), People with a history of substance abuse, Ex-Offenders.

- Questions
- Wrap Up
- Evaluation

